

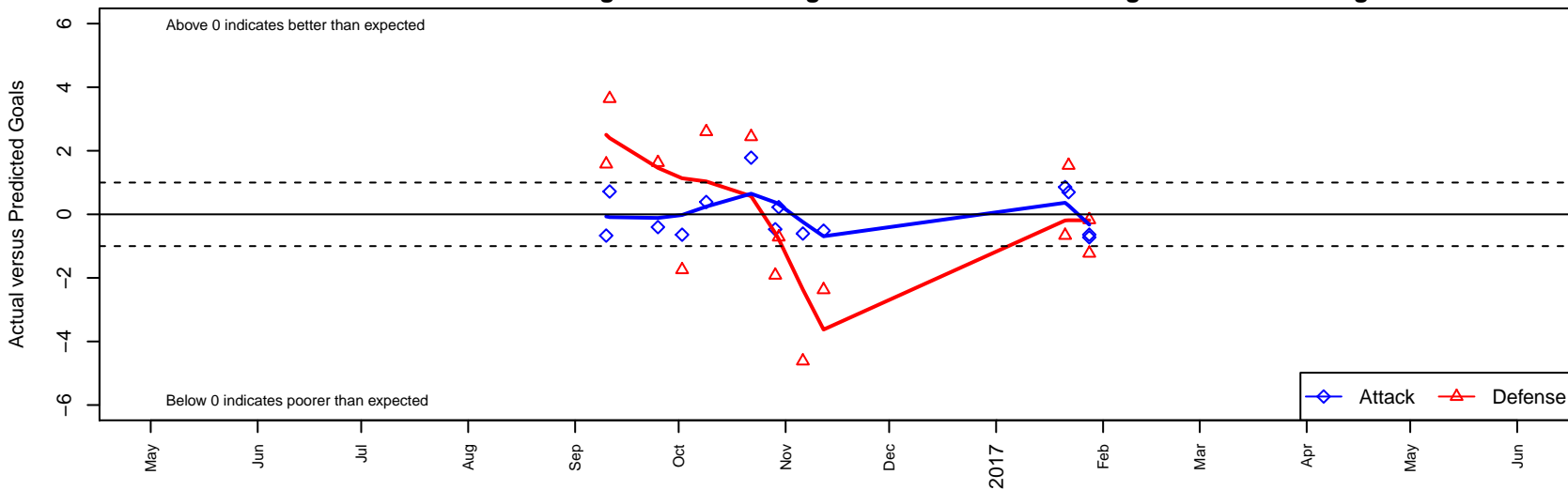
# Washington Timbers Green 2 B01

Washington Timbers  
 Vancouver, WA  
 B01 total strength=1128  
 attack=3.78 defense=2.57  
 fall league = PTT B99 BHS

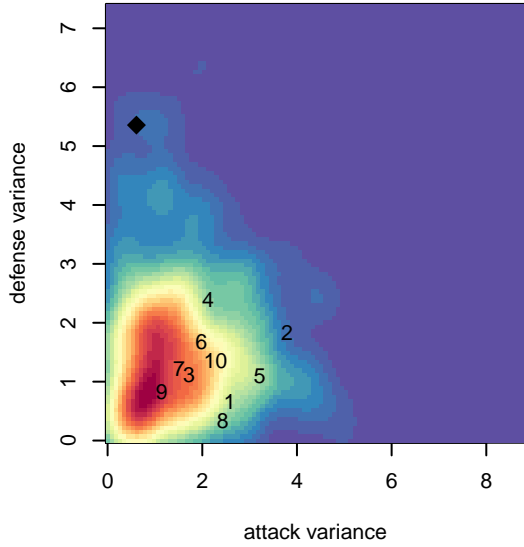
alt names used:  
 WA Timbers 01B Green 2

Venues played:  
 2016 PTT B99 BHS  
 2016 Founders Cup B01 Div A

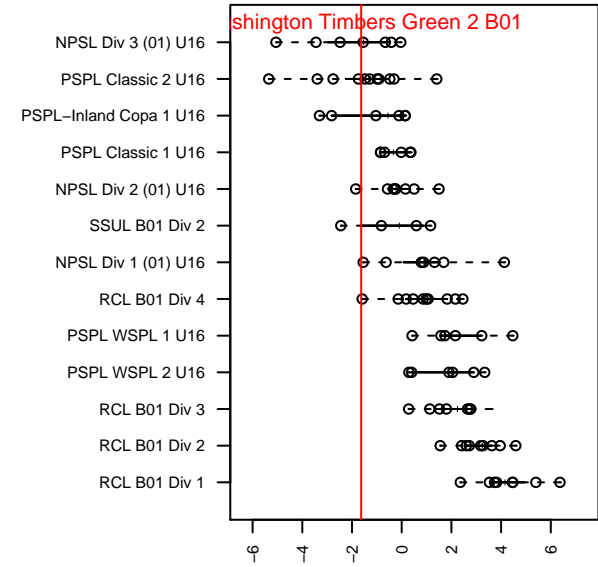
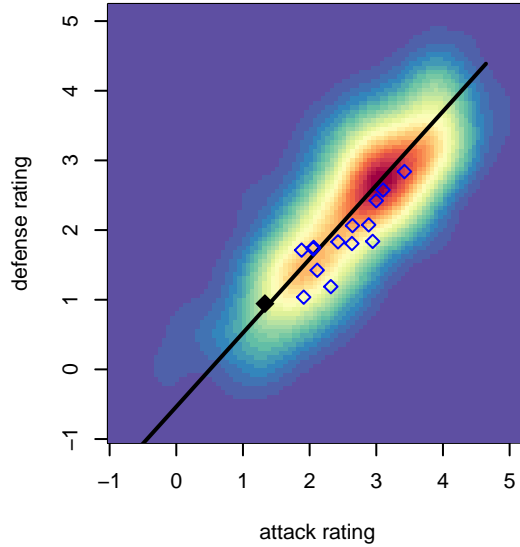
**Washington Timbers Green 2 B01**  
 Dots are actual minus expected GF (blue circles) and GA (red triangles).  
 Blue line is smoothed change in attack strength. Red is smoothed change in defense strength.



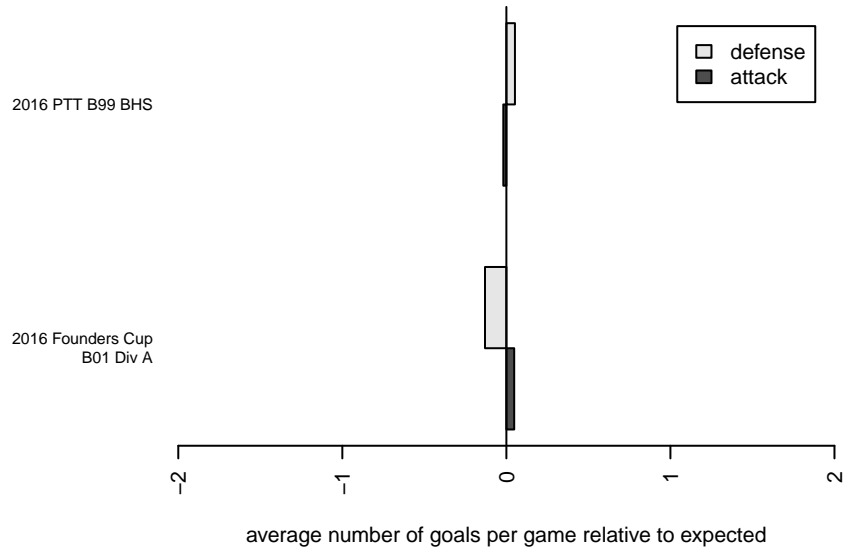
**attack and defense variance (black dot)  
relative to other teams  
and top 10 in region**



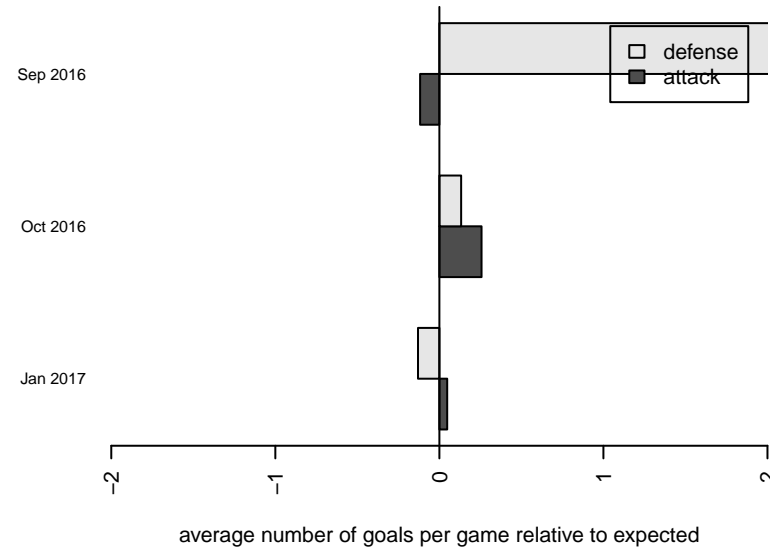
**attack and defense rating  
relative to others at age  
and all opponents in last 13 months**



**Performance relative to 13 month average**



**Performance relative to 13 month average**



<b>date</b>	<b>home</b>		<b>away</b>		<b>venue</b>	<b>pred.home</b>	<b>pred.away</b>
2017-01-28	Washington Timbers Green 2 B01	0	STU Evolution Yellow B01	4	2016 Founders Cup B01 Div A	0.64	2.77
2017-01-28	Washington Timbers Green 2 B01	0	Southlake Select Vipers B01	5	2016 Founders Cup B01 Div A	0.72	4.83
2017-01-22	Bellevue United Select B01	1	Washington Timbers Green 2 B01	2	2016 Founders Cup B01 Div A	2.54	1.30
2017-01-21	NSC Green Wave B01	4	Washington Timbers Green 2 B01	2	2016 Founders Cup B01 Div A	3.34	1.14
2016-11-12	Washington Timbers Green 2 B01	0	LASC Leones Negros B01	9	2016 PTT B99 BHS	0.51	6.63
2016-11-06	Washington Timbers Green 2 B01	0	Academia Leon B00	12	2016 PTT B99 BHS	0.60	7.38
2016-10-30	Washington Timbers Green 1 B99	4	Washington Timbers Green 2 B01	1	2016 PTT B99 BHS	3.28	0.78
2016-10-29	SFC -Unk B00	8	Washington Timbers Green 2 B01	0	2016 PTT B99 BHS	6.08	0.47
2016-10-22	Washington Timbers Green 2 B01	2	Pacific FC Blue-Strikers B98	9	2016 PTT B99 BHS	0.22	11.44
2016-10-09	Washington Timbers White 1 B00	2	Washington Timbers Green 2 B01	1	2016 PTT B99 BHS	4.60	0.61
2016-10-02	Washington Timbers Green 2 B01	0	Washington Timbers White 1 B01	5	2016 PTT B99 BHS	0.64	3.26
2016-09-25	Washington Timbers Green 2 B01	0	Academia Leon B99	6	2016 PTT B99 BHS	0.40	7.63
2016-09-11	Washington Timbers Green 1 B98	5	Washington Timbers Green 2 B01	1	2016 PTT B99 BHS	8.64	0.28
2016-09-10	Pacific FC Blue B01	1	Washington Timbers Green 2 B01	0	2016 PTT B99 BHS	2.58	0.67